



This institution is an equal opportunity provider and employer.

ANNUAL REPORT & FINANCIAL STATEMENT

INCLUDES: SHARED GOVERNANCE & MOST RECENT COMMUNITY ASSESSMENT

2023-2024

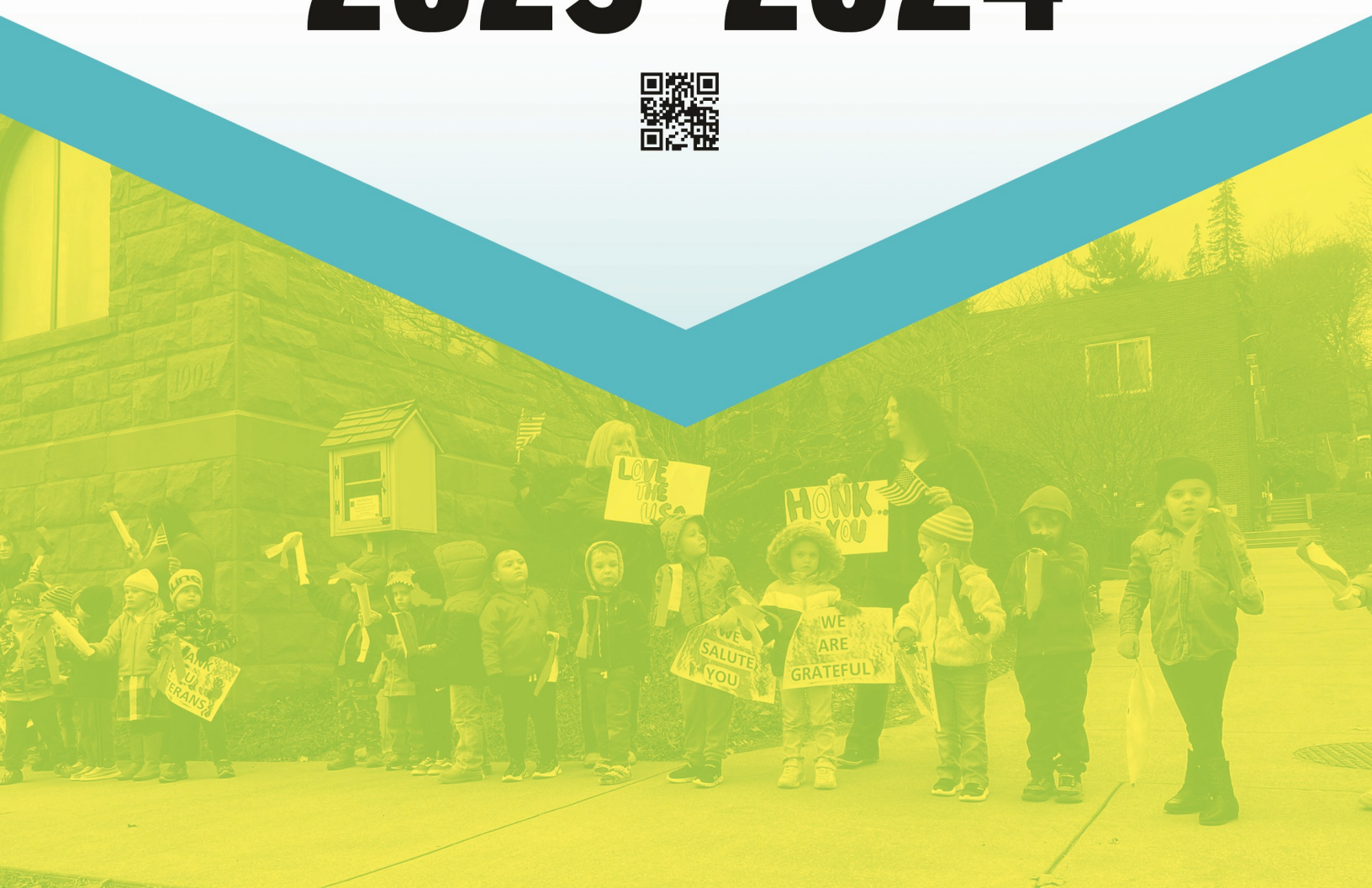


TABLE OF CONTENTS

Message from the Executive Director	1
About Our Agency	2
Vision Statement	2
Mission Statement.....	2
Monthly Enrollment by Program.....	3
Head Start Program	4-7
Progress on Child Outcomes	7
Early Head Start Program.....	8-11
Progress on Child Outcomes	11
Pre-K Counts Program.....	12-13
Progress on Child Outcomes	13
Parents as Teacher Program.....	14
Mark Rummel Scholarship	15
Financial Overview	16-17
Summary of Community Assessment	18-21
Shared Governance	22-23
School Readiness	24
USDA Non-Discrimination Statement & Complaint Procedure	25

A MESSAGE FROM THE EXECUTIVE DIRECTOR

Dear Community,

In accordance with Section 644(a)(2) of the Head Start Act, we are excited to present and share our annual public report for the Head Start / Early Head Start 2023-2024 school year highlighting our progress and commitment to our children, parents, and community.

Throughout the past year, we have made significant accomplishments. These efforts have been made possible by the dedication of our staff, the support of our partners, and the trust placed in us by our community.

The Annual Report is made available to the public in the following formats:

- Website access: The full report is available for viewing on our JCHSI website;
<https://jcheadstart.com/annual-report>
- Community Partners: A copy of the annual report is distributed by email and/or mail to community partners.
- Request by phone: A printed copy may be requested by phone by contacting our main office at (814) 849-3660.
- Request by mail: A printed copy may be requested by mail at:
Jefferson-Clarion Head Start, Inc.,
18 Western Ave., Suite C
Brookville, PA 15825

We are excited about the possibilities that lie ahead. We invite you to join us on this journey as we continue to work towards our mission and vision. We welcome your feedback and thank you for your continued support and engagement. Together, we can make a meaningful difference in our community.

We would also like to give some special recognition to 16 employees who hit major milestones this year:

Jenna Bish	5 years	Susana Aristeguieta	10 years	Heather Yoho	10 years
Diane Davenport	5 years	Diane Black	10 years	Rich Martin	15 years
Emily Martin	5 years	Kristin Boozer	10 years	Joanna Jones	20 years
Tonya Mooney	5 years	Kris Crytser	10 years	Pam Johnson	35 years
Jonathan Stiglitz	5 years	Amanda Girt	10 years		
Maria Troutman	5 years	Michelle Ragsdale	10 years		

Thank You for your dedication and years of service of providing high quality services to children and families.

Sincerely,



Pam Johnson
Executive Director
Jefferson-Clarion Head Start, Inc.



ABOUT OUR AGENCY

Jefferson-Clarion Head Start, Inc. is a private non-profit corporation that serves as the administrative entity for child and family development programs including Head Start, Early Head Start, Maternal, Infant Early Childhood Home Visiting (MIECHV), Pre-K Counts, Head Start Supplemental Assistance Program (HSSAP), and a Parents as Teachers (PAT) grant. Although each of these programs may differ in some respects, each has our fundamental mission at its core which is to provide comprehensive services to children and families.

To operate these programs effectively our agency has established and maintains effective partnerships with other community organizations, child care providers and school districts. Jefferson-Clarion Head Start, Inc. believes we are to be an integral part of our community where many agencies and service providers work together to identify needs, remove barriers and maximize our resources collectively to meet the needs of children and families.

The contents of this annual report will provide specific information about each program as well as highlight the major accomplishments over the past year.

We want to take this opportunity to acknowledge and express our appreciation to our Board of Directors, Policy Council, and Advisory Councils who so willingly volunteer their time and expertise to provide support, oversight and direction to our agency. Finally, this report is dedicated to our staff that work so hard and go above and beyond the call of duty to provide the highest level of quality services to children and families.

VISION STATEMENT

Jefferson-Clarion Head Start, Inc. will continue to be a role model to other organizations in the provision of services to children and families. We will be a community leader in establishing and maintaining effective collaborations. We will strive to continually improve our program while identifying and responding to the changing needs of our communities.

MISSION STATEMENT

Jefferson-Clarion Head Start, Inc. is dedicated to providing comprehensive education and health services to income eligible children to ensure they will be healthier and better prepared for success in school and life. We seek to promote family self-sufficiency by providing educational opportunities to parents and establishing family partnerships designed to build upon the strengths of each family. We are committed to collaborating effectively with schools, child care providers, and other social service agencies while being responsive to the changing needs of our communities.

MONTHLY ENROLLMENT BY PROGRAM

	HEAD START		EARLY HEAD START		PRE-K COUNTS	
Jul 23	<i>Closed</i>		104	78%	<i>Closed</i>	
Aug 23	<i>Closed</i>		114	85%	128	73%
Sep 23	225	86%	107	80%	146	83%
Oct 23	227	87%	105	78%	152	86%
Nov 23	225	86%	114	85%	154	88%
Dec 23	223	85%	112	84%	152	86%
Jan 24	226	86%	125	93%	152	86%
Feb 24	230	88%	116	87%	154	88%
Mar 24	234	89%	115	86%	155	88%
Apr 24	231	88%	119	89%	154	88%
May 24	229	87%	129	96%	153	87%
Jun 24	<i>Closed</i>		121	90%	153	87%

HEAD START

Head Start is a federally-funded, high quality child and family development program that promotes the school readiness of low-income children 3-5 years of age by enhancing their cognitive, social, and emotional development in learning environments that support children's growth in language, literacy, math, science, social and emotional functioning, creative arts, physical skills, and approaches to learning.



Head Start also provides children and their families with health, educational, nutritional, social, and other services that are determined, based on family needs assessments, to be necessary.

At least 10% of enrollment opportunities are made available for children with disabilities. Head Start recognizes the importance of family-focused early intervention and strives to build upon the strengths of each family. Services and opportunities to children and families are provided through Head Start's major service areas which include:

- **Education:** Provides a variety of developmentally appropriate learning experiences to foster intellectual, social and emotional growth through center based options
- **Transition:** Provides children and parents with information and educational opportunities to prepare them for entrance into the public school system
- **Disabilities Services:** Ensures that children with disabilities receive the full range of developmental services in an inclusive environment
- **Health/Nutrition:** Emphasizes the importance of early identification and treatment of health problems and comprehensive health care
- **Mental Health:** Recognizes the importance of providing mental health and psychological services to children and parents to encourage emotional and social development
- **Parent Involvement:** Recognizes parents as the primary educator of their child and the most important influence in their child's lives, parental involvement is encouraged at all levels
- **Social Services:** Provides a wide range of education and training opportunities and referral and support services to meet identified family needs

IMPORTANT INDICATORS FOR 2023-2024

- **273** children received Head Start services (funded enrollment is 262).
- **231** families (93%) participated in a family partnership process.
- **85%** of all children enrolled received a medical exam.
- **87%** of children completed a dental exam, of those 45% needed treatment; 41% received treatment.
- **90%** of children were up-to-date with immunizations.
- **45%** of children enrolled (123) were identified as having a disability.
- Of the **249** families served, **110** (44%) were single-parent families.
- **86%** of children served were income eligible (*below poverty guidelines or categorically eligible*)
- **9%** were over-income and **5%** were between 100% and 130% of the federal poverty guidelines.

JEFFERSON-CLARION HEAD START

provides services to approximately
300 children each year.

Services are available in the following areas:

JEFFERSON COUNTY

- Brockway
- Brookville
- Punxsutawney
- Reynoldsville

CLARION COUNTY

- Clarion Area
- Knox
- New Bethlehem
- Rimersburg

RESULTS OF MOST RECENT FEDERAL ON-SITE REVIEW & ANNUAL AUDIT

The Administration for Children and Families (ACF) conducted a Focus Area One (FA1) monitoring review of JCHSI from February 12, 2024 to February 14, 2024.. Based on the information of this review, ACF found that our program meets the requirements of all applicable HSPPS, Laws, regulations, and policy requirements.

Jefferson-Clarion Head Start, Inc.'s 2023-2024 Independent Audit Report was completed by the firm Troxell & Associates, LLC. An unmodified audit report was issued in February, 2025 and there were no findings or questioned costs. Visit the Agency website to view the Audit Report.

TRANSITION / SCHOOL READINESS

Jefferson-Clarion Head Start staff are committed to making the transition from Head Start to Kindergarten as smooth and successful as possible for both children and their families. To facilitate this transition, teachers utilize the Creative Curriculum that is aligned with the Pennsylvania Early Learning Standards and to provide continuity between Head Start and Kindergarten. This curriculum also provides tools that allow teachers to individualize lessons and activities for each child. This assures that each child is receiving appropriate challenges, that will allow these children to learn at their fullest potential.

School readiness goals have been identified for children in a variety of domains that are aligned with the Head Start Early Learning Framework and Pennsylvania's Early Learning Standards. All enrolled children are assessed three times each year utilizing Teaching Strategies Gold. Results of these assessments are aggregated and analyzed at the program and center levels. Teachers use the assessments to formulate goals within each child's Individual Curriculum Plan and review them with the parents.

Jefferson-Clarion Head Start, Inc. also maintains open communication and cooperation with parents, early intervention programs, and local school districts. Our goal is to ensure a smooth transition and seamless provision of services for all preschool children. Some of these responsibilities include, but are not limited to:

- Transition/Education Advisory Committee meeting that occur twice a year
- Assistance with Kindergarten registrations
- The transfer of Passport to Kindergarten portfolios, with parental consent, at transition meetings with Head Start staff and incoming Kindergarten programs
- Field trips to new school settings
- Dissemination of information and activity packets, at the end of the year, to help parents work with their child during the summer months to maintain the school readiness skills obtained in Head Start.

All of our Head Start classrooms are STAR4 (Standards, Training/Professional Development, Assistance, Resource, and Support).



PARENT INVOLVEMENT ACTIVITIES / ENGAGING FAMILIES

Many opportunities existed during the year for Parent Engagement which has and will continue to be an area of major emphasis. First and foremost, many parents and guardians of enrolled children participated as volunteers in the classroom throughout the year. Additional opportunities for parents to be directly involved with their child's development occurred through parent-staff conferences and home visits, effective participation of parents who worked in the home with their own children utilizing individualized activities sent home or those learned from workshops, flyers and newsletters.



Many parents participated in various workshops and trainings such as:

- Autumn Adventure
- Family Game Night
- Spring Fling Father & Child Dance
- Positive Solutions for Families
- PBIS

Many parents also participated in Policy Council, Center Parent Committee, or on various advisory committees for the program. In doing so, they had the opportunity to become an integral part of discussing program policies, service area reports, and program planning, as well as child and adult educational activities, health, transportation and mental health information. Additionally, parents participated in experiences and educational activities which led to their own development in areas such as child and family nutrition, prevention of child abuse, transitioning children into

kindergarten, preventative medical and dental care, home safety practices, asset building, family literacy, and community resources including links to adult education and employment training.



The “Positive Solutions for Families” parenting curriculum presented as a series workshop provides yet another opportunity for parents, raising young children, to develop parenting skills. Going forward, we will seek to engage and collaborate with parents and families, in traditional and non-traditional ways, by providing opportunities to achieve outcomes in areas such as: family well-being, parent-child relationships, families as lifelong educators, families as learners, family engagement in transitions, family connections to peers and the community, or families as advocates and leaders.

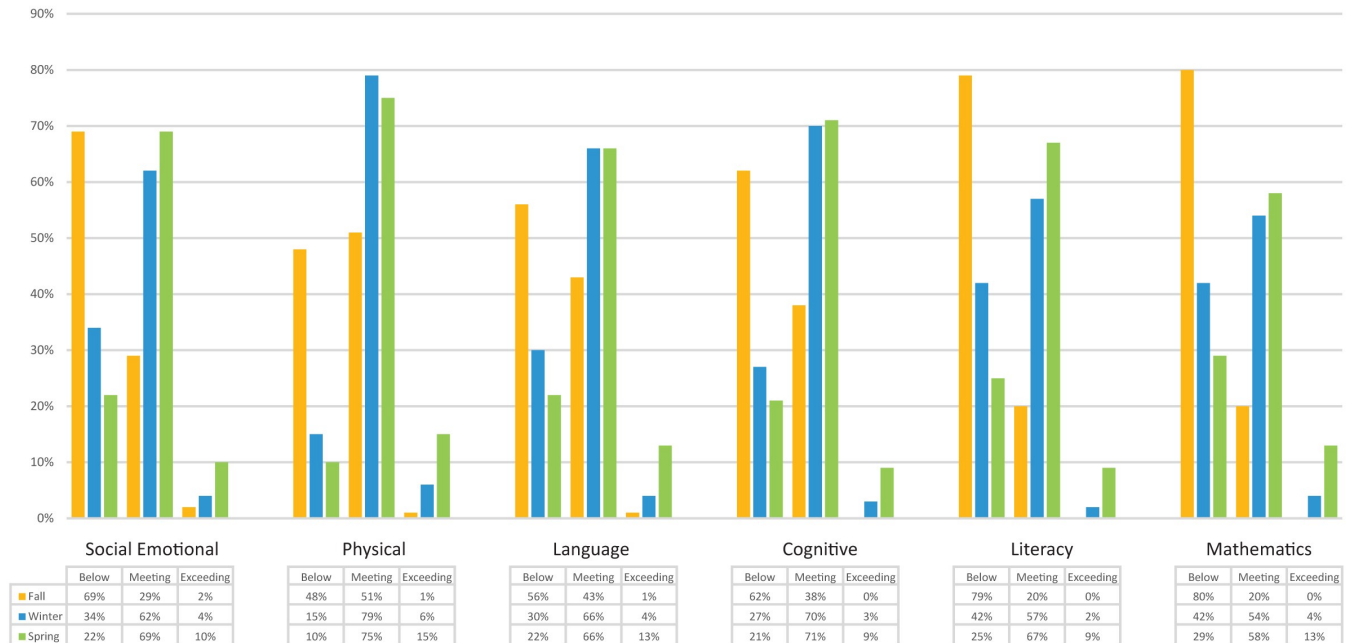
Family Partnership Agreement Data

- Top 5 goals identified
 - * Family Routine
 - * Parenting
 - * Family Finance
 - * Promoting Literacy
 - * Transportation
- 321 families set goals
- 192 total goals set
- 68 goals were fully met

CHILD OUTCOMES

Jefferson-Clarion Head Start, Inc. is committed to supporting children and families with school readiness, self-sufficiency and success in life. Our programs provides children with comprehensive health, nutrition, and other family support services, as well as a developmentally appropriate early childhood education. Our Head Start and PA Pre-K Counts programs utilize Teaching Strategies Gold (TSG) as the assessment tool whereas our Early Head Start program uses the Desired Results Developmental Profile (DRDP) assessment instrument. These tools support the goals and objectives of the curriculums we use in our early learning programs.

HEAD START PROGRESS ON CHILD OUTCOMES FALL, WINTER, & SPRING 2023-2024



EARLY HEAD START

Early Head Start is designed to provide high quality child and family development services to low-income expectant mothers and families with infants and toddlers. Services are provided year-round, at no cost, to meet the health, educational, developmental, and social needs of children and families.

Our program operates a home-based model where Parent Educators visit families each week for 1 ½ hours, however, visits may vary for expectant parents. We also offer opportunities for parents and children to come together regularly at Infant/Toddler Playtimes. Services are provided throughout Jefferson and Clarion Counties.

HOME VISITS FOCUS ON THE FOLLOWING AREAS OF SCHOOL READINESS:

PARENT-CHILD ATTACHMENT

To promote positive parent-child relationships, a Parent Educator might:

- Bring helpful information / activities about bonding with your child
- Encourage new ways to play with your child
- Provide resources and strategies that support early literacy skills
- Assist you in observing your child's strengths and give you tips for developing them
- Connect families with one of our Certified Educators of Infant Massage

CHILD HEALTH AND SAFETY

Parent Educators will provide information about the following:

- The importance of well-baby check-ups, immunizations, and early oral health care
- Recognizing a baby's cues, such as knowing when your baby is hungry
- Proper childhood nutrition, including breastfeeding support
- Ways to childproof your home



CHILD DEVELOPMENT

Parent Educators can talk about:

- What is typical for a child's age
- What to expect next in your child's development
- Preparing for preschool
- Positive discipline strategies
- Common childhood issues like sleeping or toilet training



PARENT SUPPORT

Parent Educators or other EHS staff may assist parents in setting goals such as:

- Employment
- Adult education
- Stress management
- Budgeting
- Transportation

SERVICES TO EXPECTANT MOTHERS & FAMILIES

Parent Educators and our EHS staff can also perform home visits or assist in providing support/transportation to prenatal visits. Services include:

- Education on fetal development
- Education on nutrition and breastfeeding
- Assistance in preparing siblings for baby's arrival
- Assistance in preparing a birthing plan
- Education on the effects of smoking, alcohol, and drug use during pregnancy
- Assistance in identifying emotional supports and education on postpartum depression and anxiety
- Home visit by a licensed nurse within 14 days of birth

CHILD ASSESSMENTS

Children are assessed three times per year, using the Desired Rating Development Profile (DRDP) assessment tool. Parents and their Parent Educator jointly develop an Individual Curriculum Plan (ICP) that will identify goals for each child's development. Assessment information is aggregated and analyzed at each checkpoint to determine children's progress towards meeting school readiness goals.

SERVICES TO FAMILIES AND CHILDREN WITH SPECIAL NEEDS / DISABILITIES

At least 10% of enrollment opportunities are made available to children with special needs. Early Head Start staff work closely with parents, professionals and other agencies to ensure children receive comprehensive services. Parent Educators and Early Head Start staff will work with parents to provide education on advocacy and will provide activities and resources to help children with disabilities reach their full potential. We served a total of 31 children (17% of enrollment) with an Individual Family Service Plan (IFSP) in 2023—2024 School Year.



MENTAL HEALTH

Early Head Start recognizes the importance of providing mental health support to infants, toddlers and their families through caring, long-term relationships established by staff and certified mental health professionals. The quality of the parent-child relationship is the most important aspect of infant mental health promotion, prevention and treatment. Newborns and their parents are given an opportunity to complete an infant massage course to aid in positive relationship building. Early Head Start staff, who are Certified Educators of Infant Massage, conduct these courses in the home. Parents are educated on the importance of touch and the strokes used to massage an infant, how massage aides in the bond and attachment that occurs between a child and parent, using "gentle movements" to promote brain development by crossing the mid-line, and ways to aid a baby that may suffer from colic or tummy problems.

To aid in bringing mental wellness into our program, we now have a certified therapy dog through Alliance of Therapy Dogs named Finnegan. Finnegan enjoys going into the Head start and PreK classrooms, into the Early Head Start Infant Toddler Playtimes and PAT Group Connections, spending time at agency events and bringing joy and smiles to everyone he meets.

TRANSITION

Beginning six months prior to a toddler's third birthday, a comprehensive transition process begins with each family. Staff work with families to ensure a smooth transition occurs into Head Start or another preschool program. Some of the activities involved in the transition plan are: educating parents about "getting ready" for preschool, visiting a preschool classroom, completing a Passport to Preschool which is given to the incoming preschool teacher and using social stories to teach children what to expect at their new preschool classroom.

FAMILY ENGAGEMENT

Research shows that children experience more positive social and academic outcomes when their family is involved with their education. In Early Head Start, families have the opportunity to build these skills and learn about their important role in their child's life.

All caregivers are encouraged to participate in the planning of home visits, Infant Toddler Playtime (ITP) family engagement events, Parenting and Understanding Shared Experiences (PAUSE) meetings, and Policy Council. Participation allows them to design their EHS services and build the confidence they'll need to be an advocate for their child.

Family Engagement Data

- 41 families participated in ITP
- 5 families attended more than 10 ITP events
- 12 families engaged in EHS PAUSE meetings
- 5 EHS parents sat on Policy Council as Representatives
- 2 EHS parents sat on Policy Council as Alternates

FAMILY SERVICES

Early Head Start Parent Educators partner with families to develop Family Partnership Agreements (FPAs) each year that help them set goals which are important to them. Action steps include responsibilities for both the family and staff, along with connections to other community agencies when necessary.

Family Partnership Agreement Data

- Top 5 goals identified
 - * Family Routine
 - * Parenting
 - * Family Finance
 - * Promoting Literacy
 - * Transportation
- 80 families set goals
- 115 total goals set
- 48 goals were fully met

RESULTS OF MOST RECENT FEDERAL ON-SITE REVIEW & ANNUAL AUDIT

The Administration for Children and Families (ACF) conducted a Focus Area One (FA1) monitoring review of JCHSI from February 12, 2024 to February 14, 2024. Based on the information of this review, ACF found that our program meets the requirements of all applicable HSPPS, Laws, regulations, and policy requirements.

Jefferson-Clarion Head Start, Inc.'s 2022-2023 Independent Audit Report was completed by the firm Troxell & Associates, LLC. An unmodified audit report was issued in February, 2025 and there were no findings or questioned costs. Visit the Agency website to view the Audit Report.



2023-2024 ENROLLMENT DATA

Total Funded Enrollment	134
MIECHV Grant Program	50
Early Head Start	84
Total number of Pregnant Women	26
Children by Age:	
Under 1 Year	84
1 Year Old	45
2 Years Old	49
Pregnant Women	26
Total Cumulative Enrollment:	204
Total Number of Families Served:	150

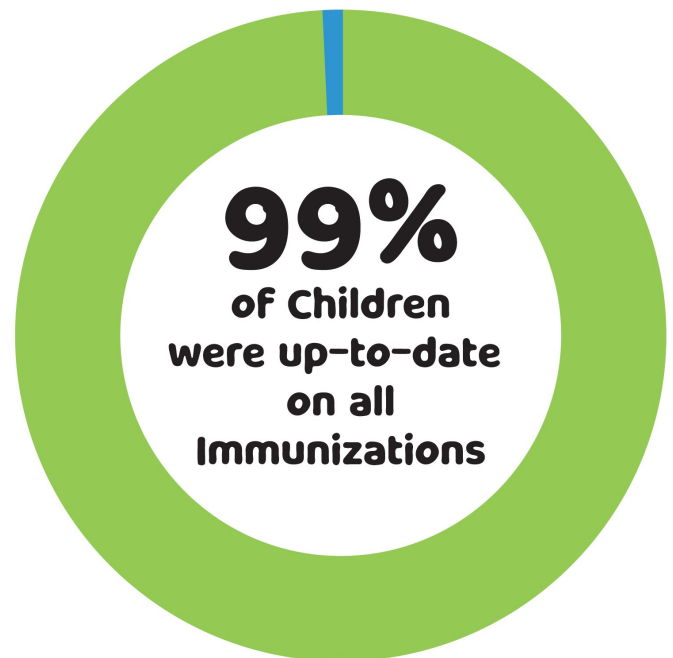
- **90%** (183) of children and pregnant women were income eligible (below Poverty Guidelines or categorically eligible)
- **3%** of children and pregnant women's income were in the 100-130% of the federal poverty line and **7%** were over-income.

100%

**of Pregnant Women
Received Prenatal Care**

IMPORTANT INDICATORS FOR 2023-2024

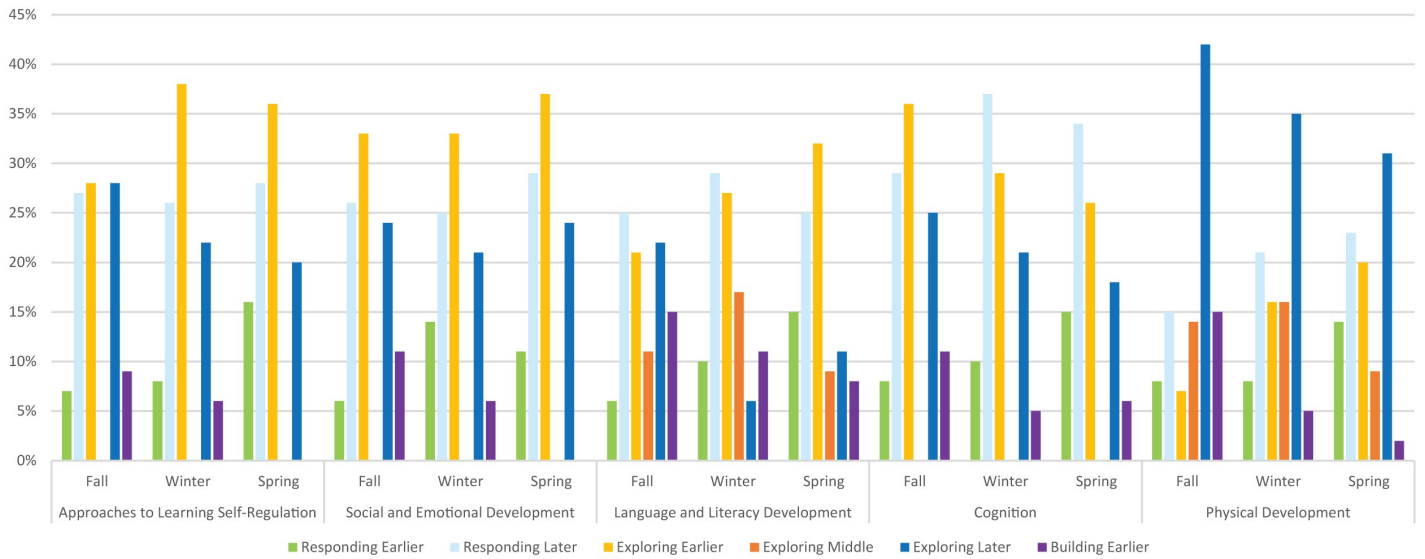
- **119** (67%) children were up-to-date for their EPSDT medical exam
- **176** (99%) children were up-to-date on all immunizations
- **42** (24%) children received a dental exam
- **176** (99%) children received a hearing & vision screenings
- **173** (97%) children completed screenings for developmental concerns and **152** (85%) children completed screenings for behavioral concerns
- **26** (100%) pregnant women received prenatal care
- **2** (8%) drops prior to delivery
- **177** (99%) children had health insurance
- **26** (100%) pregnant women had health insurance
- 17% of children enrolled (31) were identified as having a disability.



CHILD OUTCOMES

Jefferson-Clarion Head Start, Inc. is committed to supporting children and families with school readiness, self-sufficiency and success in life. Our Early Head Start program utilizes the Desired Results Developmental Profile (DRDP) assessment instrument in a comprehensive approach that facilitates the achievement of positive outcomes identified for both children and families. The Infant/Toddler Comprehensive View is designed for children from early infancy to 36 months of age. This tool supports the goals and objectives of the Partners for Healthy Baby curriculum and aligns with the Head Start Early Learning Outcomes Framework.

EARLY HEAD START PROGRESS ON CHILD OUTCOMES FALL, WINTER, & SPRING 2023-2024



PRE-K COUNTS

The Jefferson-Clarion Pre-K Counts program is a high-quality prekindergarten education program for three and four-year-olds funded by the Pennsylvania Office of Child Development and Early Learning. Children participate in classes five days a week and attend a total of 180 classroom days each year. There are 11 full-day classrooms that children attend for five and a half (5.5) hours per day, five days a week.

Every component of our Pre-K Counts program is designed to provide high-quality early education for those children who can benefit most from the experience. Children who come to kindergarten without knowing all the skills they need often stay behind and struggle in school. Quality pre-kindergarten prepares children for reading, paying attention, following directions and getting along with others. Pre-K Counts gives children a chance to learn, to become excited about school and to be better students. This strong early start in pre-kindergarten means they have a better chance of doing well in school, of going on to college or career training and of getting a job.

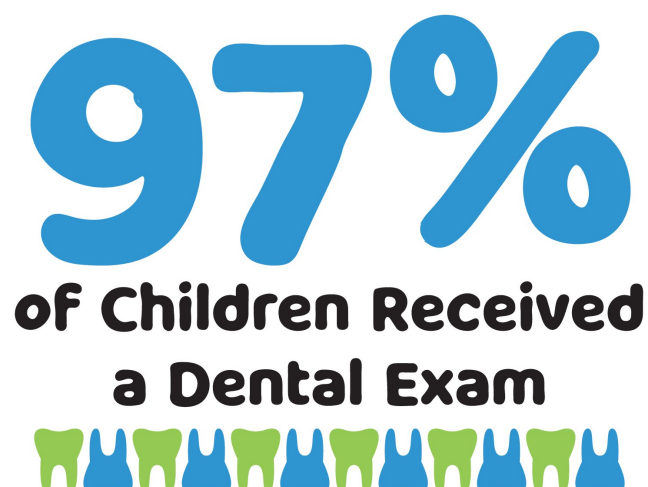


Each child who participates in a PA Pre-K Counts classroom in Jefferson or Clarion County will have the opportunity to participate in large group activities, small group activities, and one on one instruction. Children also participate in gross and fine motor activities, songs, games, free play which includes choosing from multiple centers such as dramatic play, math and science, art, sand and water, reading and writing centers, manipulatives, computer and other areas. The children also have the opportunity to enjoy outside activities and try different foods during meals and cooking experiences.

Children between the ages of 3 and 4 who are at risk for school failure because of income (must be below 300% of the federal poverty level, or a family of 4 earning less than \$90,000 this year) are eligible to receive Pre-K Counts services. Other risk factors may be used to determine priorities for selection.

IMPORTANT INDICATORS FOR 2023-2024

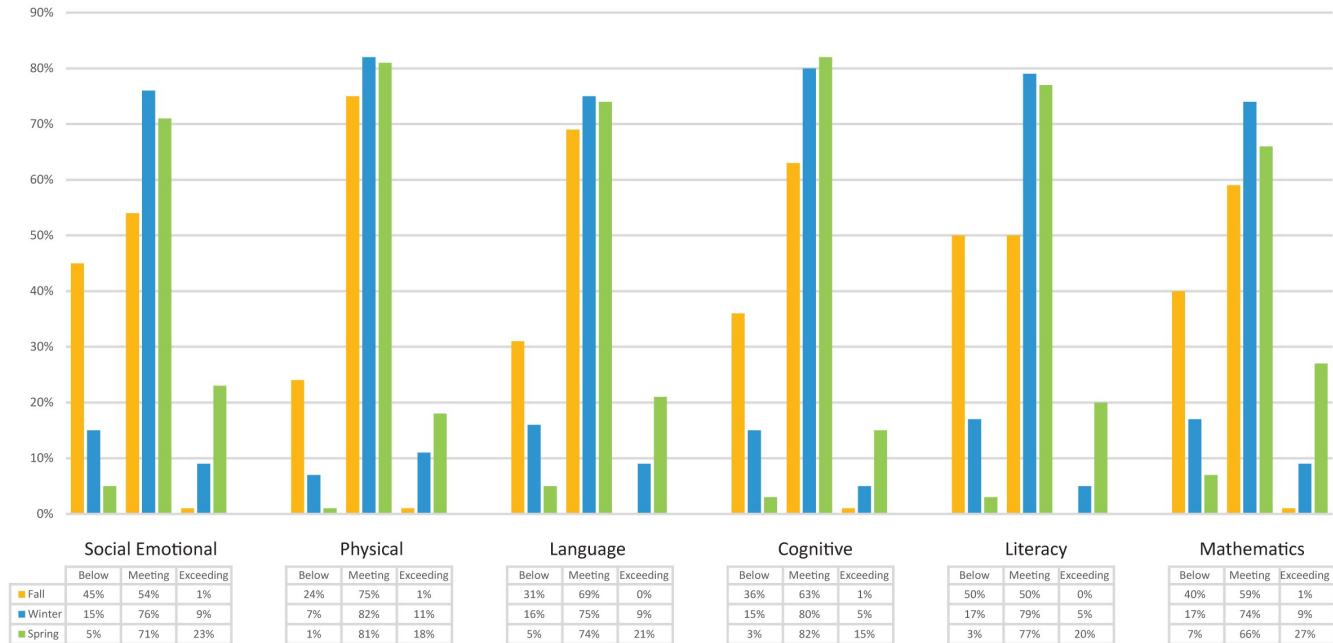
- **172** children received Pre-K Counts Services (funded enrollment is 176)
- **86%** of all children enrolled received a medical exam
- **92%** of children completed a dental exam, of those **34%** needed treatment; **46%** received treatment
- **90%** of children were up-to-date with immunizations
- **41%** of children enrolled (70) were identified as having a disability
- **172** children were assessed using state approved **Teaching Strategies Gold**. Children were assessed in the following areas:
 - Social-Emotional
 - Language and Literacy
 - Mathematics
 - Science and Technology
 - Social Studies
 - The Arts
 - Physical Development
 - Health
 - Cognitive
 - English Language Acquisition
- All Pre-K Counts teachers have an **Early Childhood Certification**
- The average classroom size for full-day classes is **16 students to 2 to 3 staff**.



CHILD OUTCOMES

Jefferson-Clarion Head Start, Inc. is committed to supporting children and families with school readiness, self-sufficiency and success in life. Our programs provides children with comprehensive health, nutrition, and other family support services, as well as a developmentally appropriate early childhood education. Our Head Start and PA Pre-K Counts programs utilize Teaching Strategies Gold (TSG) as the assessment tool whereas our Early Head Start program uses the Desired Results Developmental Profile (DRDP) assessment instrument. These tools support the goals and objectives of the curriculums we use in our early learning programs.

PRE-K COUNTS PROGRESS ON CHILD OUTCOMES FALL, WINTER, & SPRING 2023-2024



PARENTS AS TEACHERS

Jefferson-Clarion Head Start, Inc. was awarded the Parents as Teachers grant in the fall of 2019. The agency started services to families in February 2020 right before the pandemic hit the country. It has been difficult getting this program up and running in the middle of a pandemic. However, the staff continued training and enrolling families. In the 2023-2024 year the Parents as Teachers program served 44 families providing home visiting services to expectant women and families with children birth through kindergarten. The program has worked with many agency's such as Children and Youth and Early Intervention to enroll families that they have referred to the program.



The goals for the Parents as Teachers program include:

- Prevent child abuse and neglect
- Increase parent knowledge of early childhood development
- Improve parenting practices, increasing children's school readiness and success

- Provide early detection of developmental delays and health issues
- Help improve the health and well-being of families with young children.

The Parents as Teachers program provides home visits to families living in Clarion County and has been funded through the Family Support grants awarded by OCDEL (Office of Child Development and Early Learning.) There are no income guidelines for this program, so any family in Clarion County is eligible to receive this program. However, families with the highest needs receive priority for enrollment. The program was able to provide home visits and Group Connections to encourage families to network and let their children socialize with other children their age.

STATISTICAL SUMMARY

- **50** Families in total received visits.
- Ages of children served:
 - 0-3 Months: **1** Children Total
 - 4-11 Months: **5** Children Total
 - 12-23 Months: **13** Children Total
 - 24-35 Months: **11** Children Total
 - 36-47 Months: **6** Children Total
 - 48-59 Months: **19** Children Total
 - 60+ Months (5+ Years): **6** Children Total
- **61** Children Total
- Prenatal Families Served: **4**
- **561** Total Home Visits were completed
- **28** Group Connections
- **15** Families attended at least one group



MARK RUMMEL SCHOLARSHIP

Jefferson-Clarion Head Start, Inc. employees raised slightly over \$2,000 for the Mark Rummel Memorial Scholarship. We received 19 applications from area school districts for the Mark Rummel Memorial Scholarship. Two \$1,000 scholarships were awarded to two Union School District Seniors who are Rimersburg Head Start Alumni; Ryan Yori who intends to major in Special Education and Mackenzie Barger who intends to major in Music Education.



FINANCIAL OVERVIEW

	HEAD START	EARLY HEAD START	AGENCY WIDE
Salaries & Wages	2,136,249.66	661,354.01	5,281,613.40
Fringe Benefits	564,124.13	206,491.33	1,419,737.53
Total Salaries and Related Expenses	2,700,373.79	867,845.34	6,701,350.93
Consultant & Professional Fees	13,469.21	3,487.23	30,942.39
Supplies	170,237.01	26,296.00	435,080.94
In-Kind**	140,210.49	-	140,210.49
Occupancy	152,859.29	66,005.80	415,234.53
Insurance	16,053.11	11,153.53	45,305.21
Training & Technical Assistance	31,741.61	19,728.00	77,558.88
Vehicle Maintenance and Repair	7,325.73	11,084.24	27,260.77
Travel	4,135.27	5,923.84	55,671.86
Postage	3,246.80	580.56	4,960.42
Telephone/Internet	32,803.07	16,081.97	102,804.05
Advertising, Printing & Publications	11,158.86	4,131.68	28,989.71
Payroll Processing	9,649.72	1,867.71	19,496.13
Food & Related Expenses	22,943.90	379.94	373,012.96
Parent Activities & Involvement	1,051.55	231.79	1,824.86
Literacy & Parent Resources	5,005.76	500.93	11,872.41
Assessment/Recruitment	4,800.11	1,720.87	13,103.58
Contracted Services	39,771.65	3,413.04	191,150.70
Dues/Memberships	3,999.76	1,741.13	10,199.00
Depreciation	17,283.35	36,809.50	71,065.71
Interest	-	-	6,025.89
Total Expenses:	\$ 3,388,120.04	\$ 1,078,983.10	\$ 8,763,121.42

****NOTE:** In-Kind reported above reflects donations meeting the criteria for Generally Accepted Accounting Principles (GAAP) reporting. Actual In-Kind received is greater than reported above.

Federal and State Funding Sources	2022-2023	2023-2024
Head Start	3,101,965.00	3,335,039.00
Early Head Start	962,412.00	1,050,621.00
Maternal, Infant, Early Childhood Home Visiting	521,128.00	521,128.00
Maternal, Infant, Early Childhood Home Visiting - American Rescue Plan	97,387.00	97,387.00
PA Pre-K Counts	1,760,000.00	1,760,000.00
Head Start State Supplemental (HSSAP)	920,000.00	920,000.00
State Pilot Program OUD/SUD	187,798.00	187,798.00
PARENTS AS TEACHERS (PAT)	319,961.00	400,211.00
Child and Adult Care Food Program (CACFP)	261,009.33	271,690.68
American Rescue Plan (4/1/21-3/31/23)	358,950.00	-
Positive Parenting Program (Triple-P): Passed to Subrecipient	95,213.00	95,213.00
TOTAL \$	8,585,823.33 \$	8,639,087.68

FUNDS RECEIVED	2022-2023	2023-2024
Head Start	3,101,965.00	3,335,039.00
Early Head Start	962,412.00	1,050,621.00
Maternal, Infant, Early Childhood Home Visiting	521,128.00	521,128.00
Maternal, Infant, Early Childhood Home Visiting - American Rescue Plan	97,387.00	97,387.00
PA Pre-K Counts	1,760,000.00	1,760,000.00
Head Start State Supplemental (HSSAP)	920,000.00	920,000.00
State Pilot Program OUD/SUD	187,798.00	187,798.00
PARENTS AS TEACHERS (PAT)	319,961.00	400,211.00
Child and Adult Care Food Program (CACFP)	261,009.33	271,690.68
American Rescue Plan (4/1/21-3/31/23)	172,455.44	-
Positive Parenting Program (Triple-P): Passed to Subrecipient	95,213.00	95,213.00
TOTAL \$	8,399,328.77 \$	8,639,087.68

Local Funding Sources	2022-2023	2023-2024
Head Start Non-Federal	203,462.31	308,619.99
Early Head Start Non-Federal	47,508.56	48,021.50
Local Funds	28,009.01	31,067.81
TOTAL \$	278,979.88 \$	387,709.30

SUMMARY OF COMMUNITY ASSESSMENT

Methodology:

In accordance with federal Head Start Performance Standards, Jefferson-Clarion Head Start, Inc. (JCHS, Inc.) conducted a comprehensive Community Assessment during program year 2017-2018 and have updated each year.

Every effort was made to ensure that the data contained in this document is used for the following purposes:

- Support our strategic planning process and establishment of the five year project period program goals
- Determine community strengths, needs and resources
- Determine child and family needs
- Determine the most appropriate service options to provide to children and families
- Determine the geographic areas in most need of services
- Identify trends based on prior years' service data
- Determine agency strengths and challenges
- Analyze data to chart future direction of services and programming

Data collection and analysis:

Jefferson-Clarion Head Start, Inc. conducted research on agency, county and state data services for the following topic areas:

- Demographic make-up of Head Start, Early Head Start and Pre-K Counts eligible children and their families, including their estimated number, racial, ethnic and linguistic composition
- Number of children experiencing homelessness
- Number of children in foster care
- Number of children with disabilities and relevant resources provided to children by community agencies
- Other early care and education programs/services that may serve Head Start eligible children, including publicly funded state and local preschool programs and the approximate number of eligible children served
- The education, health, nutrition and social services needs of eligible children and families
- The prevailing social or economic factors that impact children and families' well-being
- Work, school and training schedules of parents with eligible children
- Resources in the community that are available to address the needs of eligible children and families

Primary data collection sources:

Program Information Reports, Parent Survey of Children's Needs, Community Service Provider Survey of Community Strengths and Needs and Assessment of Children's Needs, Staff Survey of Community Strengths and Needs and Assessment of Children's Needs, monthly service area statistical reports, Penn State Data Center, School Districts, Child Care Information Services, Family Partnership Agreements, Pennsylvania Office of Child Development and Early Learning Program, Reach and Risk Assessment, Center for Workforce Information and Analysis, County Profiles, School District Profiles, and ChildPlus Data Reports

Data trends:

Our agency utilized current data as well as data generated, in many cases, over the previous four or five years to identify potential trends and predict future direction based on this data. This framework of data analysis allows us to utilize the most accurate data tracked in recent years and make appropriate and reasonable decisions for future strategic program planning. We have discovered that there is an amazing degree of consistency in data on children and families we serve from year to year.

Surveys:

JCHS, Inc. utilized a parent survey which was distributed to each family in Head Start, Early Head Start and Pre-K Counts to obtain their input into their perception of what are the most pressing needs of their children in the areas of Education, Health, Nutrition and Social Services.

We also distributed surveys to community based organizations and all school districts in our catchment area. These surveys also requested information on the needs of children identical to the parent survey but also requested their input into the strengths and needs of our communities in a variety of different areas. (Both surveys are included as attachments)

Governance review and approval:

The complete Community Assessment is reviewed and approved by both the Policy Council and Board of Directors.

Identification of Key Trends:

- There has been no major shift in bi-county demographics and the demographics of Head Start families is representative of our geographic area.
- Community service providers and parents' perspectives on children's needs have been very different but consistent over the years.
- Unemployment rates in our service area have run comparable to state and national averages in the past.
- School censuses once on a moderate decline, have fluctuated in recent years with a slight decline the last 2 years.
- The majority of children being verified with disabilities continue to be in two categories; developmental delays and speech and language impairments and the total number of children 3-4 years old identified with disabilities has increased over the last three years.
- Education levels of parents have remained very consistent over the years.
- Family types of Head Start families has also remained very consistent.
- The number of Head Start children needing dental treatment has increased from the previous year, this could be the result of more children receiving dental exams at mobile clinics.
- The number of Head Start children served by a Mental Health Professional is increasing significantly.
- The number of children with disabilities served in Head Start and Early Head Start averaged about 45% for Head Start and 12% for Early Head Start last year.

Analysis of Information/Data:

- Significant risk factors exist for children and families in our bi-county area.
- There are a number of service providers for children and families in our bi-county area.

- The locations of Head Start and Pre-K Counts centers and Early Head Start home-based programs seem appropriate as enrollment statistics remain on target but there are still ongoing concerns regarding adequate waiting lists.
- There continues to be a significant difference in perceived children's needs as identified by parents and service providers.
- Since our agency now administers the Head Start Supplemental Assistance Program, Head Start, Early Head Start, and Pre-K Counts, there are many opportunities for cross referrals and the foundation of a continuum of care for children birth to kindergarten.
- With the expansion funding for Head Start and Pre-K Counts, we believe we are providing services to the majority of income eligible children in the bi-county area.
- There have been consistent increases in EHS children receiving dental examinations.
- Head Start and Early Head Start have strong relationships with Early Intervention agencies which result in high percentages of children with disabilities receiving services.
- Serving a high percentage of children with disabilities in Head Start results in increased staffing needs.

Key Organizational Strengths and Challenges

The following information is provided to identify an overview of the major strengths or areas for improvement as identified in our most recent Self-Assessment:

Key Organizational Strengths:

- Strategic planning, ongoing monitoring, fiscal management, data management and communication systems are very effective
- Use of technology
- Implementation of Creative Curriculum for seasoned staff
- Contracted PBIS Coach for education staff for both Head Start and Pre-K Counts
- EHS Coach for Parent Educators and also provides mentoring to new Parent Educators
- Head Start classrooms are at a STAR 4 level in the state QRIS system due to reciprocity
- Children's progress in meeting identified school readiness goals
- Mental Health/Behavioral Specialists for Head Start (1) and Early Head Start (1)
- Relationships/collaboration with other community agencies to provide enhanced services to children and families by providing in classroom activities with children to address personal safety, bullying, self-esteem, dental hygiene, etc. Training also offered to parents on the importance of good dental hygiene/dental exams/baby teeth etc.
- One (1) of our Health/Nutrition/Safety Managers are certified to teach Pediatric First Aid/CPR
- Strong collaboration with Golden On-Site and Miracle Dental Mobile Clinics are increasing the number of dentals completed
- Miracle Dental has a brick and mortar building in our community
- New Staff Orientation
- Implemented up to 5 days of on-site classroom training to substitutes prior to actually acting in the role as a substitute in the classrooms
- Comprehensive Family Intake Assessments directly linked to the Parent, Family, Community Engagement Framework promote the development of Family Partnership Agreements and identification of needed services by families
- ERSEA policies and procedures
- Strong case management system
- Our agency has four (4) certified CLASS assessors
- Mental Health/Behavioral Specialist provides support for assisting staff with children exhibiting challenging behaviors
- Effective services to children with disabilities and a

strong partnership with Riverview Intermediate Unit & Early Intervention service coordination for infant/toddlers

- Effective working relationships with all school districts in our catchment area
- Experienced, qualified, knowledgeable and well-trained management level staff
- Our agency has six (6) certified TPOT assessors
- One (1) of our Health/Nutrition/Safety Managers is certified as child health care advocate
- Contracted with SPEC to assist with the continued implementation of PBIS and coaching
- Health and Mental Health Service Advisory members include Managed Care Organizations (MCO's), local state health nurse, and mental health service providers
- One of our Head Start Health/Nutrition/Safety Managers has a Bachelor's degree in Nutrition and one Head Start and one Early Head Start Health/Nutrition/Safety Managers are LPN's
- Highly qualified, supportive and caring staff
- Provide or assist parents in obtaining transportation for Dental & Medical appointments to Pittsburgh, State College, etc.
- Collaboration with MCO's (Managed Care Organizations) regarding medicals and dentals
- Implementation and utilization of the Ready Rosie Parenting Curriculum
- Head Start and Pre-K Counts registrations held prior to the start of classes assists in obtaining health status of children
- Monthly Risk Assessments completed by Education Managers and Health/Nutrition/
- Safety Managers assists Management in mitigating risks
- Monitoring on a consistent basis ensures that Active Supervision plans are being implemented and followed
- Staff have improved their skills in dealing with children exhibiting dangerous behaviors by implementing PBIS and de-escalation techniques using Ukeru strategies
- Visuals in classrooms have been updated to be more diverse to promote anti-bias classrooms
- Two Education Managers (1-HS, 1-PK) are participating in the Core Leadership meetings with the IU-6 to work on imbedded practices
- Awarded state grant funds to expand Parents as Teachers (PAT) in Jefferson County with 17 slots in 2023

- Two Mental Health/Behavioral Specialists are certified trainers of Ukeru.
- Finn has been certified as a therapy dog and is beginning to go into the pre-school classrooms
- Eleven (11) staff are trained to provide Parent Café meetings
- Ten (10) home visiting staff are certified in Infant Massage (7- EHS staff and 3- PAT staff)
- PAT Parent Educator utilizes Duolingo to assist in communicating with an enrolled Spanish speaking family
- Family Engagement events were held in October in both Clarion and Jefferson County and each classroom and home base held fall family engagement events. These events were successful with good parent participation
- All Head Start Classrooms and Pre-K Counts classroom have been formally recognized by the state PAPBS network for high fidelity implementation of Universal (Tier 1) Positive Behavior Interventions and Support (PBIS)
- The agency scored 98% when completing the Benchmarks of Quality for implementing PBIS in the summer of 2024 and fall/winter of 2024
- All Head Start and Pre-K Counts classrooms are participating in the states PBS System
- Intensive Case Manager for Head Start, Early Head Start, and PAT Families
- Family Service Area Manager serves as the Homeless Liaison with local schools/entities
- Transition process from EHS to HS
- MIP Accounting Software
- All classrooms and home bases have a lending library and programs consistently provide high quality books for children's home libraries
- Five (5) Pre-K Counts Assistant Teachers and two (2) Head Start Assistant Teachers obtained their CDA in 2023-2024 program year
- Two (2) Pre-K Counts teachers moved from Level I to Level II during the 2023-2024 program year for a total of seven (7) out of eleven (11) Pre-K teachers with Level II certification

Key Organizational Challenges:

- Meeting full enrollment in all programs
- Maintain a usable waiting list for Head Start, Early Head Start, Pre-K Counts, and PAT
- Increase parent committee representation on Policy Council
- Lack of transportation services due to prohibited cost
- Reduce the turnover rate of educational staff
- The lack of dental providers participating in Medical

Assistance make it difficult for Head Start and Early Head Start children to receive a dental exam and obtain needed dental treatment

- To enhance outdoor playground areas at Head Start and Pre-K Counts classrooms
- To increase the written documentation we obtain on Early Head Start children who are up to date on well baby checks
- How to provide more opportunities for professional development for educational staff in smaller settings
- To engage all Head Start and Pre-K Counts families in language and literacy activities to support children's language and literacy acquisition
- There are insufficient resources within the community at large to provide effective mental health services
- Lack of parent interest in our Positive Solutions parenting program
- Lack of parent interest in participating in the Parent Café
- Maintaining an adequate number of available classroom substitutes in all areas of service
- Maintenance at facilities
- Adequate facilities in New Bethlehem, Punxsutawney, and Reynoldsville,
- Staff finding time to meet and develop plans for children's individual needs due to the high number of children with verified disabilities in each classroom
- Extremely high number of children with identified disabilities (42% in 2018-2019 and 2019-2020, 41% in 2020-2021, 44% in 2021-2022, 46% in 2022-2023, and 45% in 2023-2024 for Head Start and 38% of enrollment for Pre-K Counts in 2019-2020, 43% in 2020-2021, 34% in 2021-2022, 40% in 2022-2023, and 41% in 2023-2024)
- Chronic absences due to illness, lack of transportation, and other family reasons
- Families and staff accessibility to technology due to lack of internet and cell service in our rural communities

SHARED GOVERNANCE

BOARD OF DIRECTORS & POLICY COUNCIL

Shared governance is a concept very unique and distinct to the Head Start community. It is a rare occurrence when two groups share near equally in the decision-making process. Because of this governance structure it is imperative that the Policy Council and Board of Directors clearly understand their roles and responsibilities in an environment that emphasizes as well as mandates shared decision-making. Creating an appropriate environment that promotes open and continuous communication as well as access to accurate information are key ingredients in this process. The foundation in this governance structure must be that the Policy Council as well as Board of Directors share a common purpose - to improve the lives of children and families.

Our agency Policy Council and Board of Directors have a demonstrated record of effectively administering a wide array of services, overseeing and monitoring complex programs and complying with all applicable Federal, State and local laws and regulations. The composition of the governing body reflects all required membership areas of expertise as well as other backgrounds reflective of the community. Policy Council Membership is primarily composed of currently enrolled parents as well as two (2) community representatives. Policy Council members are elected by their parent groups to represent them.

There is a comprehensive Board of Directors and Policy Council Training Agenda on all relevant program topics. Efforts are made to provide trainings that correlate to specific timeframes during the program year.

Board and Policy Council members regularly receive comprehensive information on program finances, services and outcomes. They also review and approve all major program reports and policies including: personnel policies, financial policies, major program policies, grant applications, the financial audit, the self-assessment, the Program Information Report, the Community Assessment, and are active in program planning and monitoring.

SHARED GOVERNANCE

MEMBERS 2023-2024

Pam Johnson, Executive Director

Board of Directors

Janet Shreckengost, Board Chairperson

Marlene Austin, Board Vice Chairperson

Craig Coon, Treasurer

Granville Carter

Tricia Pezutti

Tiffany Pompa

Amy Shannonhouse

Policy Council Members

Paula Hanna - Community Representative

Lisa Leavens - Community Representative

Amber Bundy

Katelyn Bundy

Tina Callandar

KC Carr

Rebecca Clayton

Samantha Courteau

Alexis English

Jessie Forsyth

Jordan Friebohle

Stephanie Held

Katasha Kessler

Rachel Nicely

Scott Reynolds

Katheren Simpson

SCHOOL READINESS

Jefferson-Clarion Head Start, Inc.	
School Readiness Goals	
The following School Readiness Goals were developed with input from staff, parents, school districts and community representatives. School readiness includes preparing children for lifelong learning and the ability to adapt to changes and successful transitions throughout their education and life experiences. Parents are a critical participant in the development of their child's goals. This plan summarizes general school readiness goals with the understanding that individual goals are developed with the family for each child.	
School readiness goals were developed from the following five domains: Language and Literacy, Physical Development and Health, Approaches to Learning, Social and Emotional Development, and Cognition and General Knowledge. These goals align with the Head Start Child Development and Early Learning Framework and the Pennsylvania Early Learning Standards as well as Head Start and Early Head Start curricula, screening and assessment tools. This is a working plan and will be updated as appropriate.	
Early Head Start Ages Birth-3	Head Start Ages 3-5
Language and Literacy Development <i>Children will understand and use language for communication.</i> <i>Children will develop reading and writing skills.</i>	
Children will demonstrate age appropriate understanding and response to language.	Children will use language to express thoughts and needs.
Children will demonstrate an appreciation for books and respond to and enjoy literacy experiences.	Children will demonstrate knowledge of print and its uses.
Children will use language to communicate.	Children will comprehend and respond to books and other texts.
	Children will show an awareness that language can be broken into words, syllables, and smaller pieces of sound.
Parents will have conversations with their children and will read to their children on a daily basis.	
Jefferson-Clarion Head Start, Inc. will provide high-quality literacy experiences and materials and will provide trainings and resources that support literacy and language development.	
Physical Well-Being and Motor Development <i>Children will use and control their bodies.</i> <i>Children will make healthy choices about safety and nutrition.</i>	
Children will develop control of their gross-motor skills for movement such as sitting, crawling, walking and running.	Children will demonstrate gross-motor manipulative skills.
Children will develop fine-motor strength and coordination in their fingers and hands.	Children will develop fine-motor strength and coordination.
Children will learn and begin to show healthy and safe habits.	Children will learn and begin to show healthy and safe habits
Parents will support their child(ren) in making healthy choices and will provide opportunities for active play.	
Jefferson-Clarion Head Start, Inc. will provide children with opportunities to experience indoor and outdoor play where they use their bodies to explore the environment while building muscle control, balance, coordination and strength. Health and safety lessons will be integrated into daily experiences.	
Approaches to Learning <i>Children will engage in social interactions and learning experiences</i>	
Children will show curiosity in a variety of activities and will learn through experiences.	Children will stay focused, show curiosity for learning, and become engaged in activities.
Parents will provide a variety of experiences for their children that foster their love of learning.	
Jefferson-Clarion Head Start, Inc. will provide parents with ideas, trainings, and opportunities that support children's natural curiosity and love for learning.	
Social and Emotional Development <i>Children will develop healthy relationships and the ability to self-regulate.</i>	
Children will develop secure attachments.	Children will demonstrate a healthy self-concept.
Children will express feelings or thoughts and needs appropriately.	Children will engage in healthy relationships with adults and peers.
Children will begin to develop self-regulation.	Children will regulate emotions, attention, impulses, and behavior.
Parents will provide a nurturing home environment that provides for healthy, secure relationships with their children.	
Jefferson-Clarion Head Start, Inc. will provide loving and responsive adults that will provide activities that promote safe attachments and nurturing relationships. Training and resources will be provided to support mental wellness and self-regulation.	
Cognitive and General Knowledge <i>Children will develop thinking and problem solving skills.</i> <i>Children will explore the environment and understand how things work.</i>	
Children will begin to remember and connect experiences.	Children will think symbolically and engage in socio-dramatic play
Children will begin to engage in symbolic play.	Children will use classification skills.
Children will begin to develop a sense of number concepts and operations.	Children will use number concepts and operations
Children will begin to explore spatial relationships and shapes.	Children will explore and describe spatial relationships and shapes.
	Children will demonstrate knowledge of patterns.
Parents will support their child(ren) as they explore home and community surroundings to develop problem solving skills.	
Jefferson-Clarion Head Start, Inc. will provide activities and opportunities that will challenge children's natural curiosity and encourage development of social studies, mathematical, and scientific thinking skills.	

USDA STATEMENT

USDA NON-DISCRIMINATION STATEMENT & COMPLAINT PROCEDURE

In accordance with federal civil rights law and U.S. Department of Agriculture (USDA) civil rights regulations and policies, this institution is prohibited from discriminating on the basis of race, color, national origin, sex (including gender identity and sexual orientation), disability, age, or reprisal or retaliation for prior civil rights activity.

Program information may be made available in languages other than English. Persons with disabilities who require alternative means of communication to obtain program information (e.g., Braille, large print, audiotope, American Sign Language), should contact the responsible state or local agency that administers the program or USDA's TARGET Center at (202) 720-2600 (voice and TTY) or contact USDA through the Federal Relay Service at (800) 877-8339.

To file a program discrimination complaint, a Complainant should complete a Form AD-3027, USDA Program Discrimination Complaint Form which can be obtained online at: <https://www.usda.gov/sites/default/files/documents/ad-3027.pdf>, from any USDA office, by calling (866) 632-9992, or by writing a letter addressed to USDA. The letter must contain the complainant's name, address, telephone number, and a written description of the alleged discriminatory action in sufficient detail to inform the Assistant Secretary for Civil Rights (ASCR) about the nature and date of an alleged civil rights violation. The completed AD-3027 form or letter must be submitted to USDA by:

1. **mail:**

U.S. Department of Agriculture
Office of the Assistant Secretary for Civil Rights
1400 Independence Avenue, SW
Washington, D.C. 20250-9410; or

2. **fax:**

(833) 256-1665 or (202) 690-7442; or

3. **email:**

Program.Intake@usda.gov

This institution is an equal opportunity provider.

02/15/2023



This institution is an equal opportunity provider and employer.

JCHEADSTART.COM
INFO@JCHEADSTART.COM

HEAD START, EARLY HEAD START, & PRE-K COUNTS
18 WESTERN AVE., SUITE C
BROOKVILLE, PA 15825
1-800-628-6150

PARENTS AS TEACHERS
44 SOUTH 7TH AVE
CLARION, PA 16214
814-393-6159

